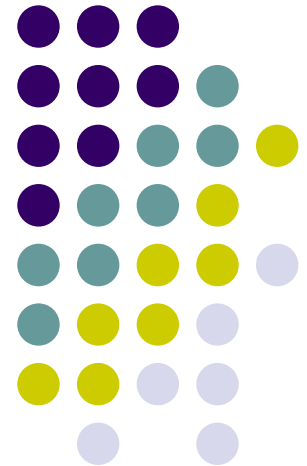


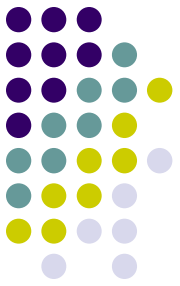
Occupational Health & Safety Management at PPC's Lignite Mines

N. Galitis, Director, H.R Dept, Mining Business Unit

A. Dimitriou, Ass. Director, H.R Dept, Mining Business Unit

Th. Vlachos, Director, Assistant to General Manager of Mines



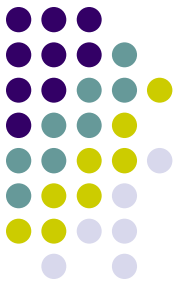


PUBLIC POWER CORPORATION OF GREECE **S.A**

- ❑ 7.5 million customers
- ❑ 12.760 MW installed capacity (70% of Greece's installed capacity)

Subsidiaries

- Hellenic Distribution System Operator S.A
- Independent Transmission System Operator S.A
- PPC Renewables S.A



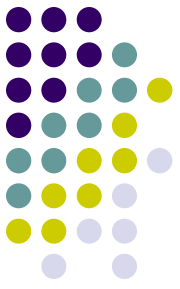
Greece's Fuel Mix

SOURCES	PERCENTAGE (%)
Lignite	47,7
Natural Gas	23,9
Renewables	10,6
Oil	8,2
Hydroelectric	6,2
Interconnections	3,4
TOTAL	100



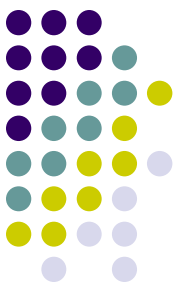
Mining Business Unit

- 4.850 employees
- 62 Mt Lignite production annually (2012)
(3rd place in EU's lignite production)
- 5 open-cast mines located at
 - Lignite Center of Western Macedonia
 - Lignite Center of Megalopolis



Mining Business Unit mission is:

- 🔔 To ensure the safety of supply of power plants with minimum cost, and
- 🔔 To formulate plans for the strategic development of mines for optimal exploitation of lignite deposits



Mining Business Unit has:

- issued **Special Safety Rules** for:
 - Main Mine Equipment (bucket-wheel excavator etc)
 - Conveyor Belts
 - Auxiliary Mine Equipment (bulldozers, loaders, graders, hydraulic excavators etc)
 - Handling, storage and use of lubricants

- proceeded to identify risks, at each mine site by conducting **Risk Assessment Studies** for all mine sites

- established and maintains **Emergency Response Contingency Plans**



RISK ASSESSMENT

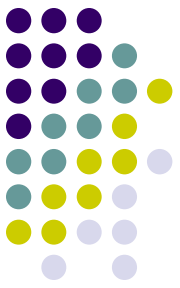
STUDIES

Addresses the issue of risk assessment and risk classification.

Includes matrices of:

- **“seriousness of injury” and “rate of risk”**
- **severity escalation**
- **possible damages**
- **remedy measures**
- **residual risk**

Their purpose is to reduce the risk to acceptable

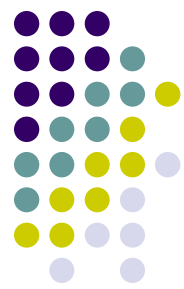


Emergency Response Contingency Plans

Identifies the potential for, and responses to, incidents and emergency situations.

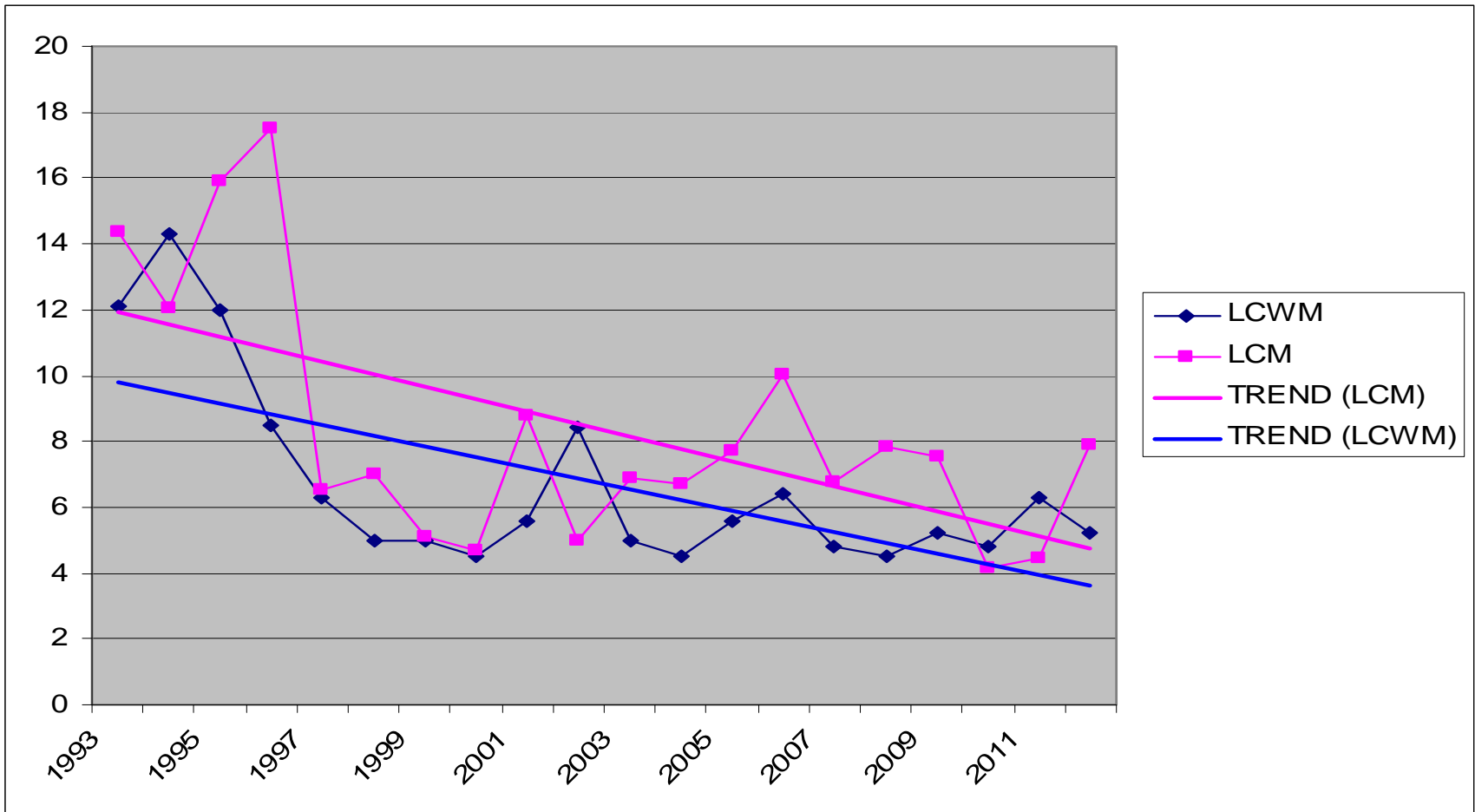
An ERCP aims to:

- ❑ minimize the interruption of operation due to unplanned events
- ❑ limit the extent of losses and disasters and prevent their escalation
- ❑ implement in advance alternative operation modes
- ❑ train mine staff in emergency procedures
- ❑ plan for the fast and smooth recovery of operation
- ❑ minimize financial implications



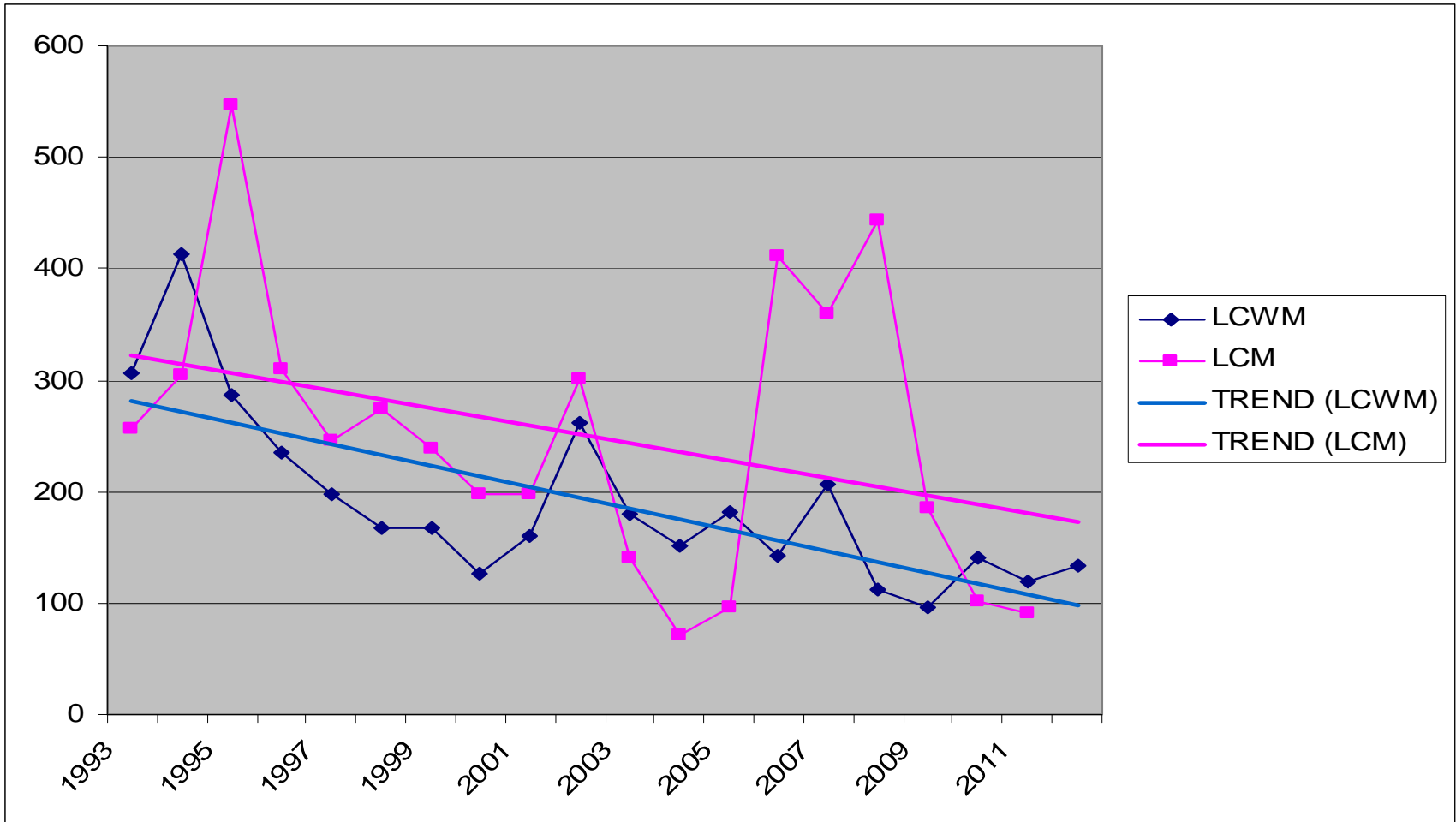
Industry

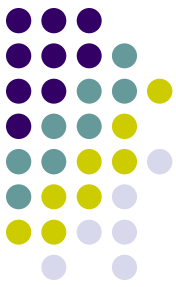
Incidence Frequency Rate



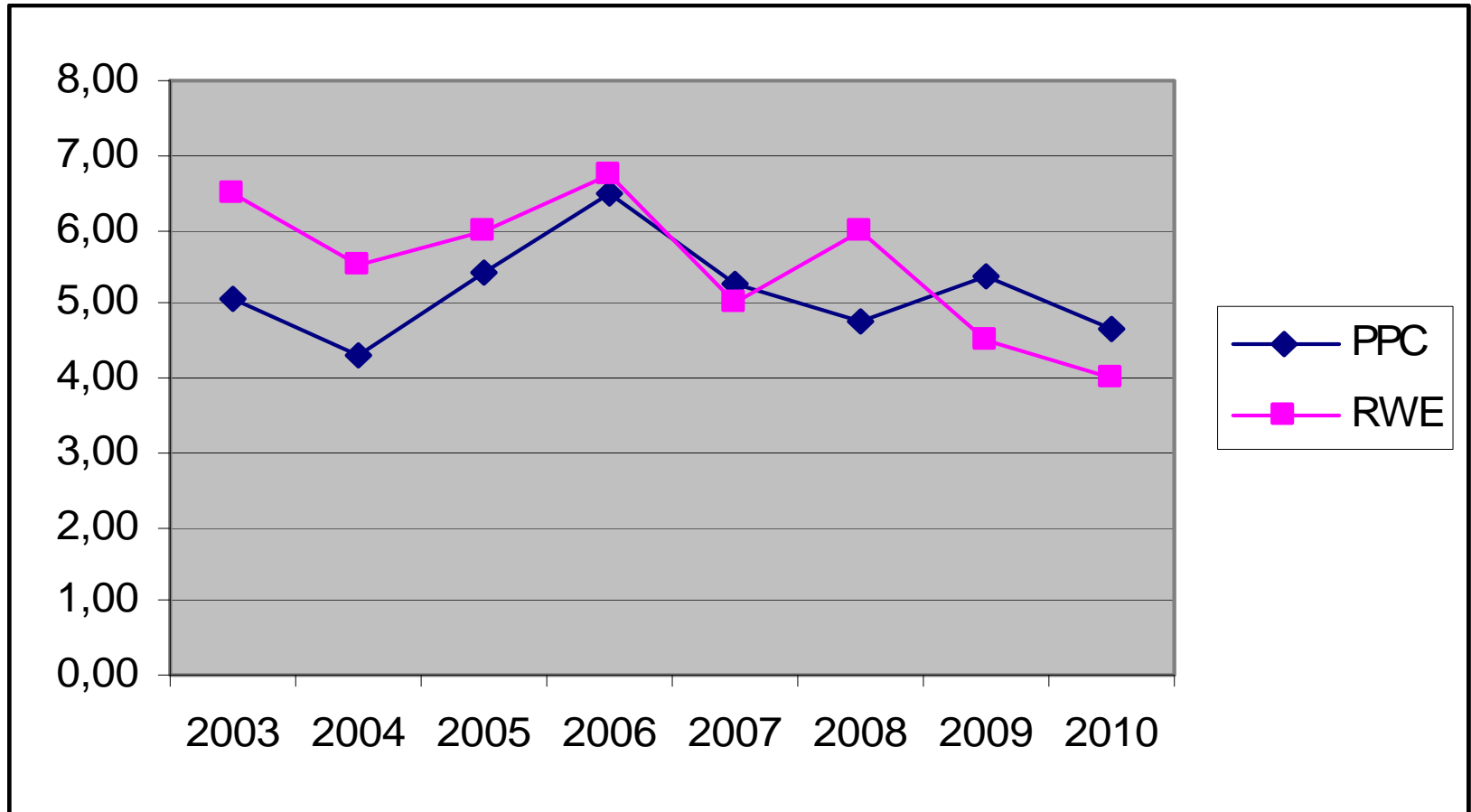


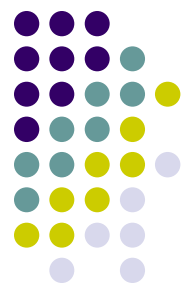
Severity Rate



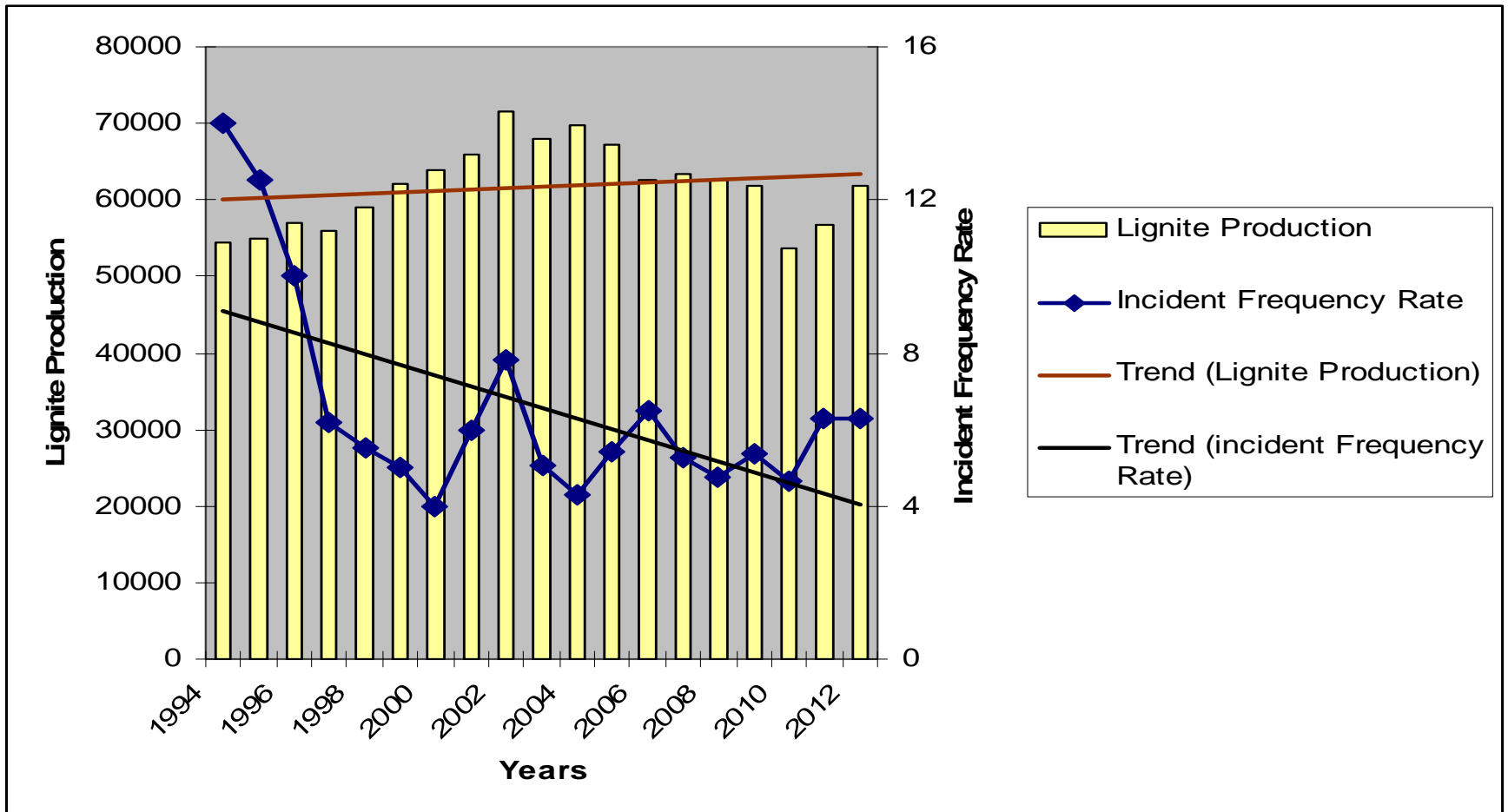


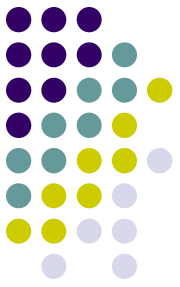
Incidence Frequency Rate PPC-RWE





Correlation between Incidence Frequency Rate and Lignite Production

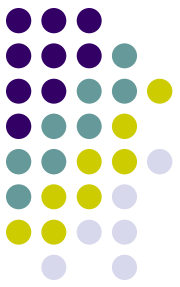




Continuous Improvement

Within the framework of continuous improvement in H & S issues, Mining Business Unit redefining its strategy through:

- ❖ Management Commitment
- ❖ Employee involvement and continuous consultation
- ❖ Continuous evaluation and review of Health & Safety initiatives
- ❖ Management of OH&S on the basis of carrying out risk assessment and ongoing review of it
- ❖ Encouraging effective 'bottom-up' communication
- ❖ OH&S performance measurement and monitoring



Overall

PPC's Mining Business Unit culture for Operational Health & Safety is based on three axes:

- ✓ Operational Health and Safety is a priority and a strategic objective
- ✓ Human capital is the most important resource of PPC's lignite mines
- ✓ Production and Safety are two sides of the same coin



THANK YOU FOR YOUR ATTENTION

