

SDIMI2013

30 June - 3 July



SUSTAINABLE DEVELOPMENT IN THE MINERALS INDUSTRY

6th International Conference

Milos Island, Greece



The WBCSD Cement Sustainability Initiative and the leadership of TITAN Cement

An important opportunity and a long-term commitment

Christos Seretis
TITAN CEMENT COMPANY
July 1st, 2013

20 years after the Earth Summit in Rio de Janeiro **environmental sustainability** and its long-term impact on humanity remain a crucial, yet largely unresolved challenge.



- Climate change
- Air emissions
- Raw material and energy resources
- Water resources
- Land impact



World Business Council for Sustainable Development (WBCSD)

- A global CEO-led coalition of 200 companies from 36 countries and 22 major industrial sectors
- Mission
 - ✓ promote sustainable development
 - ✓ become a catalyst for innovation and sustainable growth





World Business Council for Sustainable Development
Cement Sustainability Initiative

Cement Sustainability Initiative (CSI)

- A long-term project launched in 1999 by the WBCSD
- A sectorial voluntary initiative by 24 leading cement producers
- Scope
 - ✓ understanding, managing and minimizing the impacts of cement production and usage

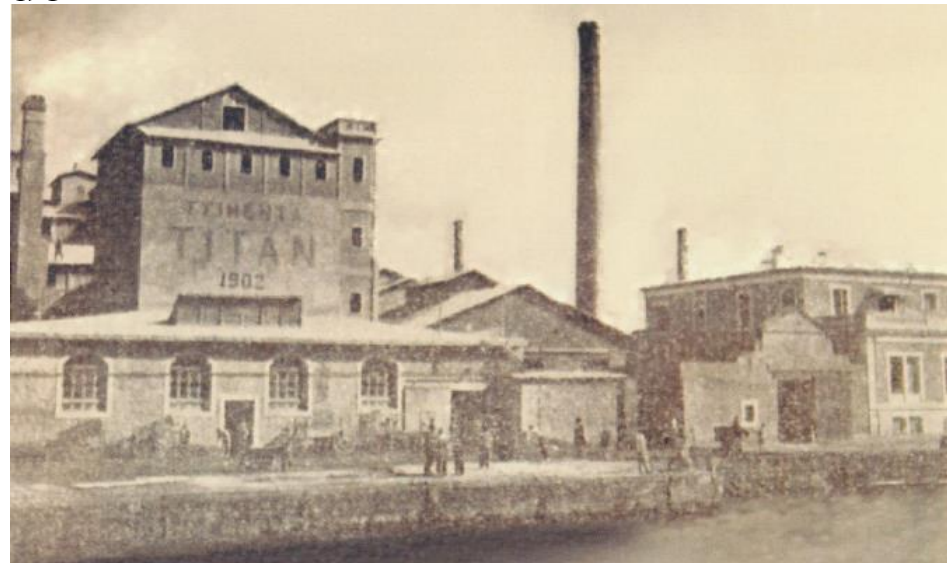


Cement Sustainability Initiative
*- Ten years of progress and
Moving on into the next decade*



An independent, vertically integrated cement and building materials producer founded in 1902

- headquartered in Greece
 - ✓ actively present in 9 countries
 - ✓ employs more than 5.500 people worldwide
- principal products include
 - cement
 - concrete
 - aggregates
 - building blocks
 - ProAsh®





We strongly believe that, **by working together**, we can

- ✓ make a more positive contribution to society and the environment
- ✓ improve our long-term business competitiveness

We focus on enabling all our **key stakeholders** by

- establishing, developing and nurturing trust-based relationships
- investing in collective actions



- 2003 – Becoming a CSI core member
- 2003 – Implement “Agenda for Action”
- 2006 – Set environmental and safety targets at both Group and local level for all critical TITAN cement activities
- 2007 – Start external verification of performance
- 2010 – Include all wholly owned TITAN operations in the scope of the verification assessment
- 2010 – Took over co-Chairing of TF5 (*Biodiversity*)
- 2012 – Took over co-Chairing of the CSI, along with and Votorantim



our agenda for action

July 2002



The Company Charter of the
Cement Sustainability Initiative

The Cement Sustainability Initiative (CSI) is a voluntary CEO-led business initiative, which operates under the World Business Council for Sustainable Development (WBCSD).

Each CSI member company must demonstrate leadership, commitment and achievement towards sustainable development and report publicly on its sustainable development performance, in accordance with established international reporting practices (incl. independent third party assurance). It promotes CSI goals and activities inside the company and with its stakeholders.

Member companies of the WBCSD Cement Sustainability Initiative pledge to apply a set of actions outlined below as part of their contribution to sustainable development.

It is our intention to complete these actions within 3 years of joining the initiative and to continue applying and reporting on these commitments.

A CSI-coordinated audit will take place every 4 years.

For the mentioned guidelines, reference is made to the latest available versions.

The commitments may be revised/updated as agreed by the core CSI members.

Status of commitments: October 2012

CO₂ and Climate Protection

- Use the tools set out in the CSI CO₂ and Energy protocol to define and make public our baseline emissions
- Develop a climate change mitigation strategy, and publish targets and progress
- Report annually on CO₂ emissions in line with the protocol
- Participate in and contribute agreed datasets to the Getting the Numbers Right global cement database system of CO₂ and energy information

Responsible Use of Fuels and Raw Materials

- Apply the guidelines developed for fuel and raw material use

Employee Health and Safety

- Apply the safety good practice guidelines compiled by the Health and Safety Task Force
- Report to the CSI annually on employee safety data in line with the guidelines developed for measuring and reporting (safety data to be reported to the CSI as of the year of joining)

Emissions Reductions

- Apply the Guidelines for Emissions Monitoring and Reporting in the Cement Industry
- Make emissions data publicly available and accessible to stakeholders
- Set emissions targets for main pollutants (NO_x, SO_x, dust) and report publicly on progress

Local Impact on Land and Communities

- Apply the Environmental and Social Impact Assessment guidelines and develop tools to integrate them into decision making processes
- Apply the Guidelines on Quarry Rehabilitation

Reporting and Communications

- Report publicly on all agreed CSI Key Performance Indicators on an annual basis
- Publish a statement of business ethics
- Establish a systematic dialogue process with stakeholders to understand and address their expectations
- Report progress on developing stakeholder engagement programs
- Develop documented and auditable environmental management systems at all plants

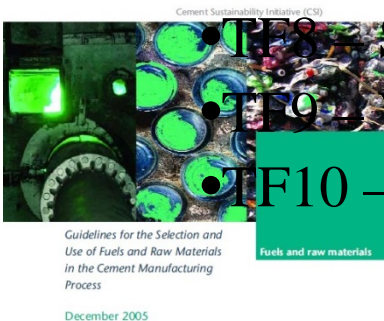
- Joined forces with other cement producers in most of the CSI working groups established for each key challenge.

Currently, actively involved in eight of CSI's Task Forces

- TF1 – Climate change
- TF2 – Co-processing
- TF3 – Health and Safety
- TF4 – Air emissions
- TF5 – Biodiversity and Land stewardship
- TF8 – Sustainability with concrete
- TF9 – Water
- TF10 – Supply chain management

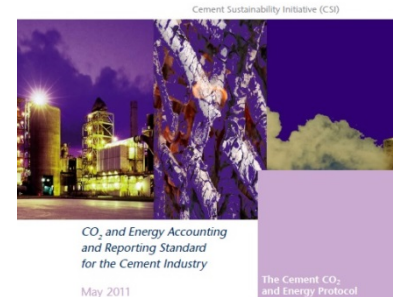
DEDICATED TO MAKING A DIFFERENCE

business solutions for a sustainable world



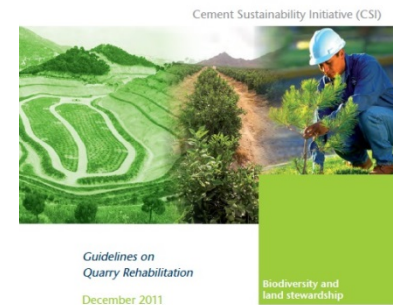
- Full incorporation of CSI tools and guidelines in the agenda for operations on Group level.
- Adopting and disseminating best practices within the company, aiming at continuous improvement and change-management.
- Stipulating CSI goals and activities inside the company.
- Taking initiatives to promote those among all of our stakeholders neighbours, employees, customers, national regional and local authorities, NGO's.

DEDICATED TO MAKING A DIFFERENCE



Version 3.0

business solutions for a sustainable world



Environmental sustainability remains a crucial issue for the human race.

Commitment to sustainability values is becoming more and more widespread.

WBCSD's role in advancing sustainability is crucial.

TITAN Group remains committed to corporate social responsibility and environmental stewardship.

Our aim is not only to **do less harm** but to do **more good** for the society.