



eldorado gold

A PERSPECTIVE ON MINING AND CORPORATE SOCIAL RESPONSIBILITY PROJECTS

**MEHMET YILMAZ, 03 JULY 2013
DIRECTOR – TUPRAG A.Ş.**

MINING IS A PIONEERING SECTOR

Mining activities tend to accelerate the social, cultural and economic development of their immediate areas.



HOW CSR PLAYS A MAJOR ROLE...

Corporate social responsibility projects play an increasingly major role in enabling companies to express themselves and explaining their positions in the face of harsh and unfounded criticisms.





eldorado gold

COMMUNICATION WITH LOCAL PEOPLE

The corporate social responsibility projects for the mining sector start at the very onset of the mining activities, i.e., at the field exploration stage. Establishing reliable communication with the people living near the exploration sites is a main driver for corporate social responsibility projects.



PUBLIC RELATIONS

➤ FOR THE LOCAL COMMUNITY

- Meetings in village coffehouses
 - *Providing information about the Mining Sector*
 - *Regular information meetings and presentations about the project*
 - *Discussing high profile events (good news and bad news)*
- Visiting other mines with villagers
- Relations with NGO'S
 - *Regularly information meetings and presentations about the project*

➤ FOR THE LOCAL PRESS

- Regularly information meetings and visiting project area



eldorado gold

INFORMATION MEETINGS





eldorado gold

VISITS TO SIMILAR PROJECTS WITH THE VILLAGERS



Inmet Mining, Copper and Zinc Mine – Çayeli, Rize

CORPORATE SOCIAL RESPONSIBILITY PROJECTS

1. RESIDENTIAL AREAS AROUND THE PROJECT AREA

- Support for infrastructure services (potable water, sewage, road etc.)
- Environmental Projects
- Support to on going agricultural activities
- Support to health services
- Support to educational institutions
- Support to disadvantaged groups

2. AROUND THE COUNTRY

- Support to the national information campaigns across the country

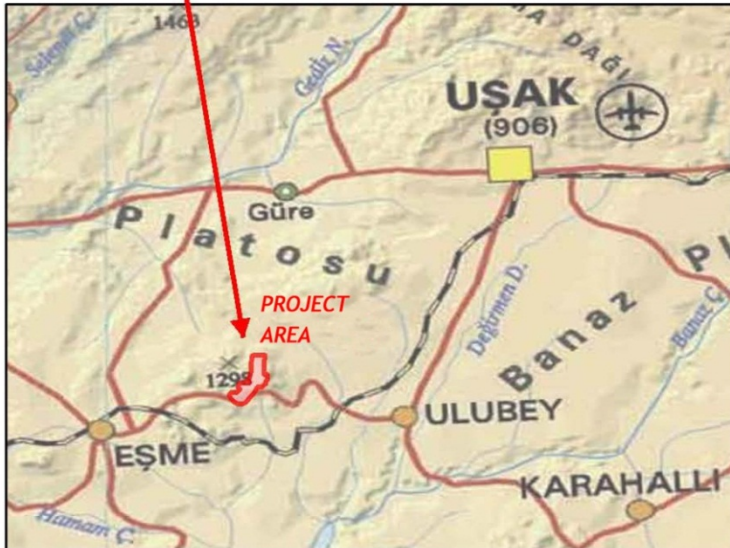
PRIORITIES IN THE CSR PROJECTS

- The expectations of the local community, in the areas of public health and safety, are always included in the project criteria
- Local environmental priorities are taken into consideration
- Participation of the local economy in the project is a must



eldorado gold

CSR IN/AROUND KISLADAG GOLD MINE - USAK



FACT SHEET –KİŞLADAĞ

- RECEIVED ENVIRONMENTAL POSITIVE CERTIFICATE IN Q2 2003
- POURED FIRST GOLD IN Q2 2006
- PROVEN + PROBABLE RESERVES : 327 TONNES AT 0,71 g/t
- PRODUCED GOLD : ~50 TONNES (since first gold poured till today)
- ANNUAL PRODUCTION : 12.5 MILLION TONNES
- ROYALTY PAYED TO TREASURY FOR 2012 IS 4,000,000 USD
- ROYALTY PAYED TO USAK FOR 2012 IS 4,000,000 USD
- RENTAL FEE PAYED TO FORESTRY FOR 2012 IS 1,150,000 USD
- NUMBER OF EMPLOYEES : ~ 1000

**** CORPORATE TAX PAYED ABOUT 62 MILLION USD IN 2012**



eldorado gold

SUPPLY OF POTABLE WATER TO VILLAGES



COST : 430,000 USD



www.eldorado gold.com



CONSTRUCTION OF SEWAGE SYSTEM FOR VILLAGES





eldorado gold

MOBILE HEALTH SCREENING CLINIC - USAK



COST : 189,000 USD



www.eldorado gold.com





eldorado gold

HEMODIALYSIS CENTER – ESME COUNTY



Eşme – Project Area : 25 km

COST : 55,000 USD



eldorado gold

TAR & GRAVEL TO THE VILLAGE ROADS



COST : 500,000 USD



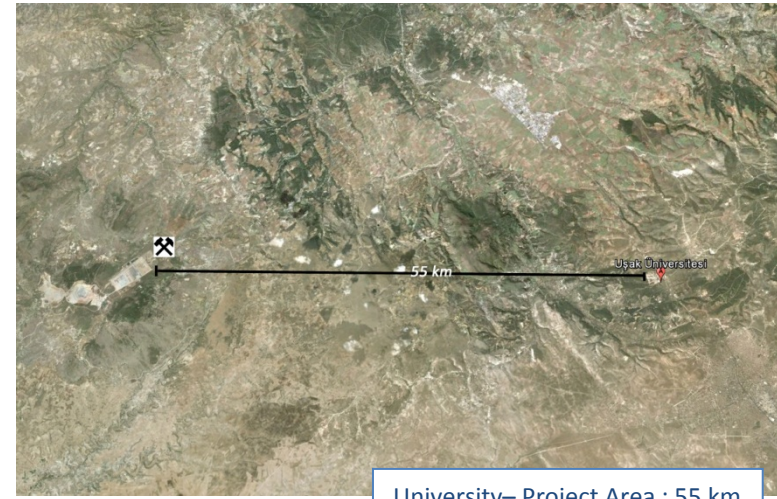
www.eldorado gold.com





eldorado gold

BUILDING A CLASSROOM FACILITY FOR USAK UNIVERSTIY



University– Project Area : 55 km



www.eldorado gold.com

COST : 4,500,000 USD





eldorado gold

PLAYGROUND FOR GUMUSKOL VILLAGE



COST : 5,000 USD



www.eldoradogold.com



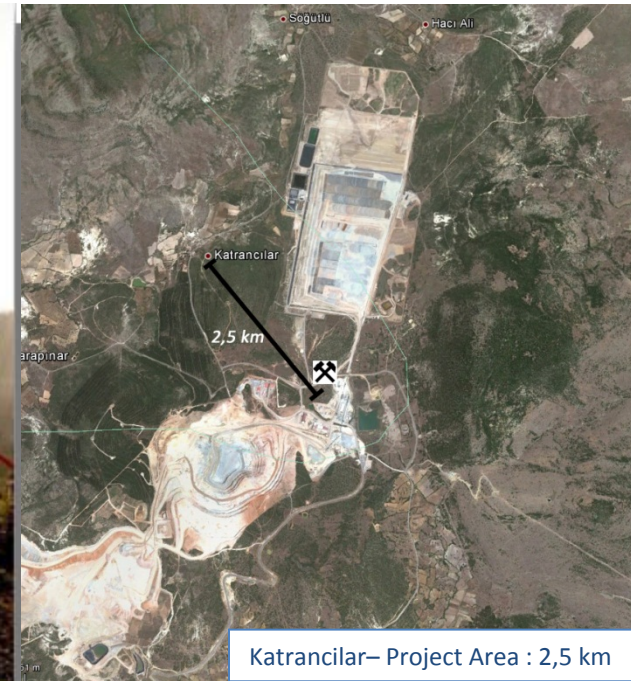


eldorado gold

VILLAGE WEDDING HALL – KATRANCILAR VILLAGE



COST : 45,000 USD



Katrancilar– Project Area : 2,5 km

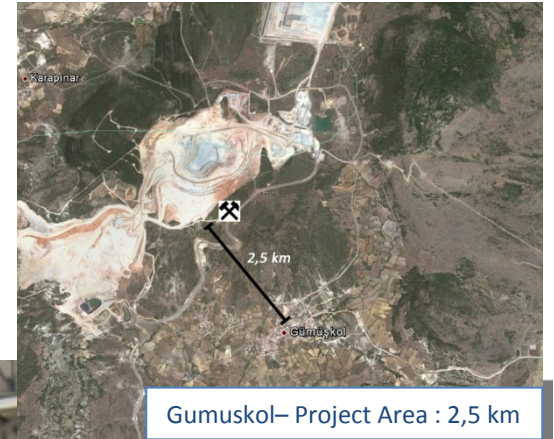


eldorado gold

CONSTRUCTION OF WEDDING HALL- GUMUSKOL VILLAGE



COST : 160,000 USD



Gumuskol- Project Area : 2,5 km





eldorado gold

MEMORIAL FOREST WITH 72,000 SAPLINGS



COST : 45,000 USD



eldorado gold

GREENHOUSES

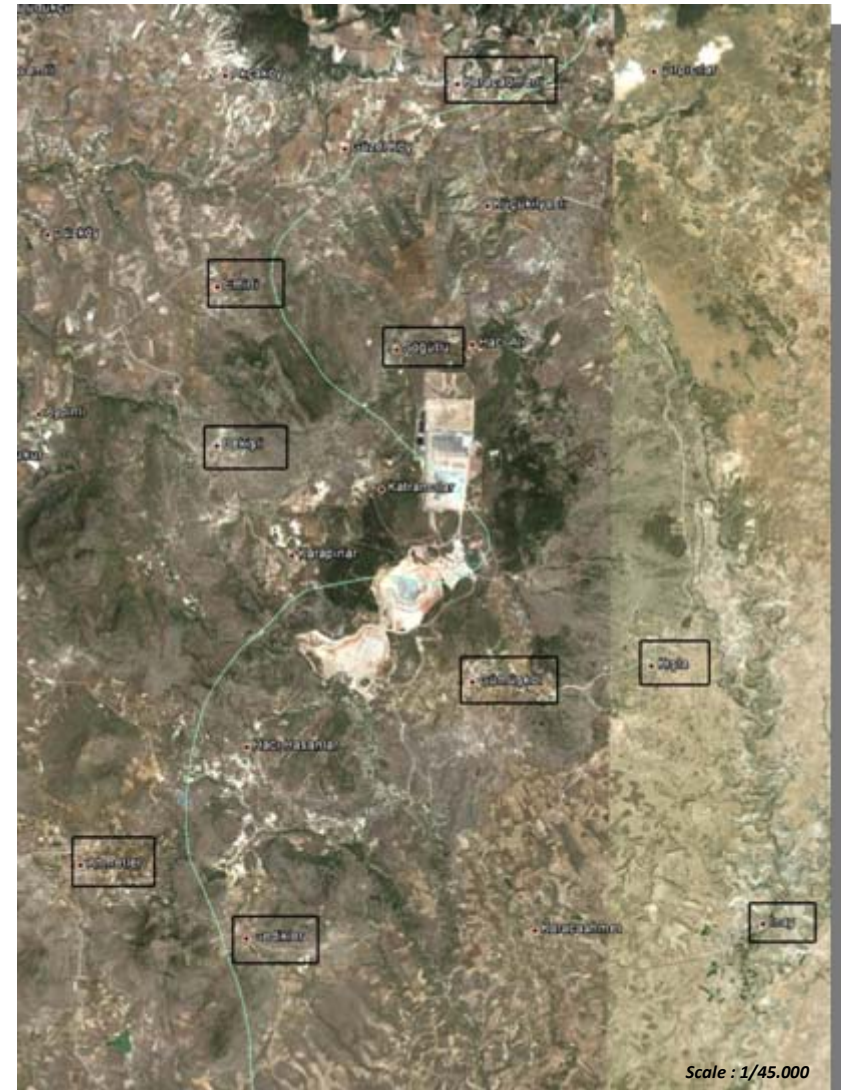




eldorado gold

CHANGES IN LIVESTOCK NUMBERS IN VILLAGES SURROUNDING KIŞLADAĞ MINE

Eşme County	Km	Ulubey County	Km
AHMETLER	7	KIŞLA	4
EMİRLİ	6	GÜMÜŞKOL	2
KOCABEY	12	İNAY	8
KARACAÖMERLİ	9	GEDİKLER	6
BEKİŞLİ	4	SÖĞÜTLÜ	4

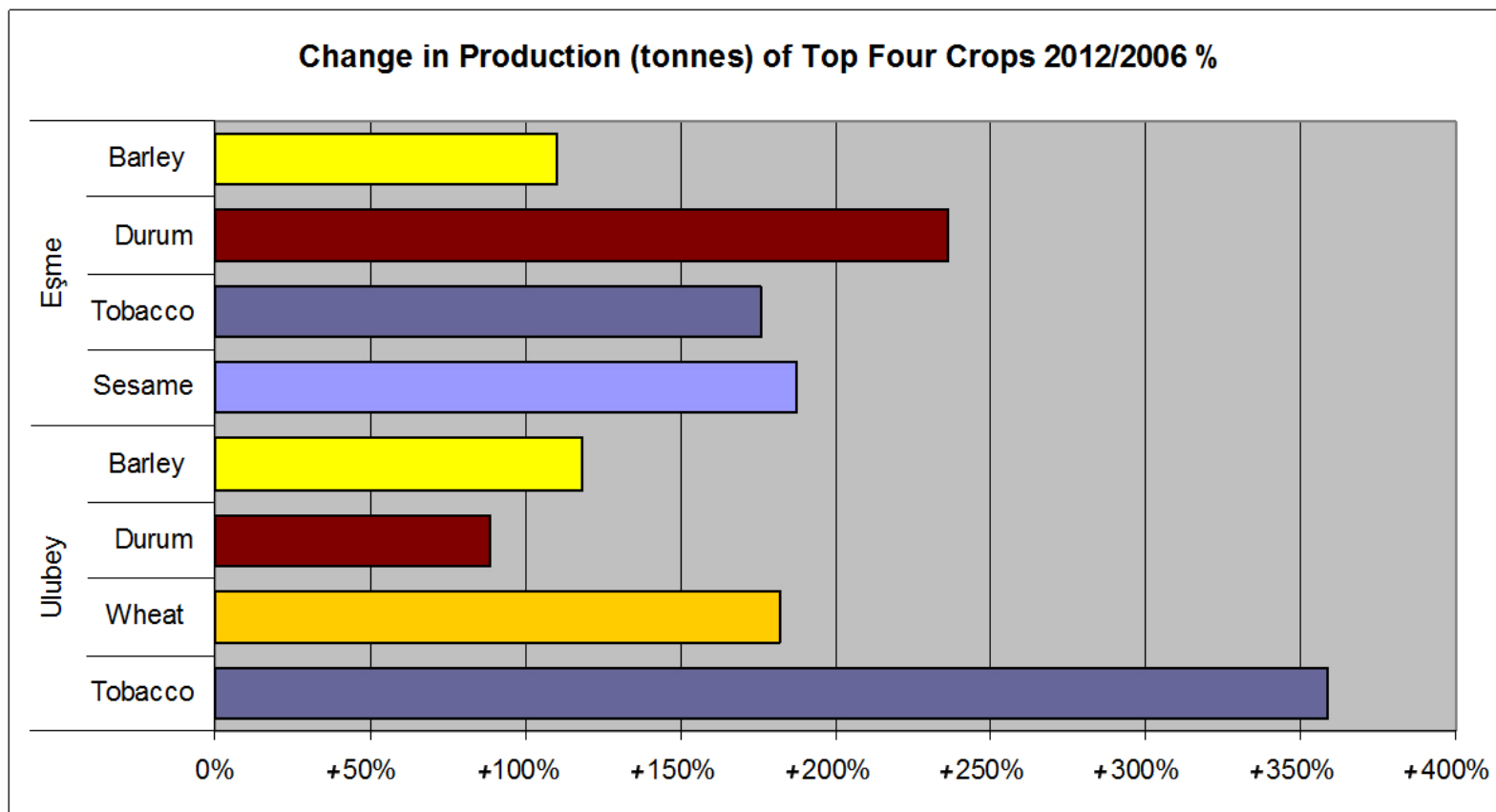


Scale : 1/45.000



eldorado gold

CHANGE IN CROP PRODUCTION OF TOP FOUR CROPS IN EŞME AND ULUBEY COUNTIES 2012/2006 %

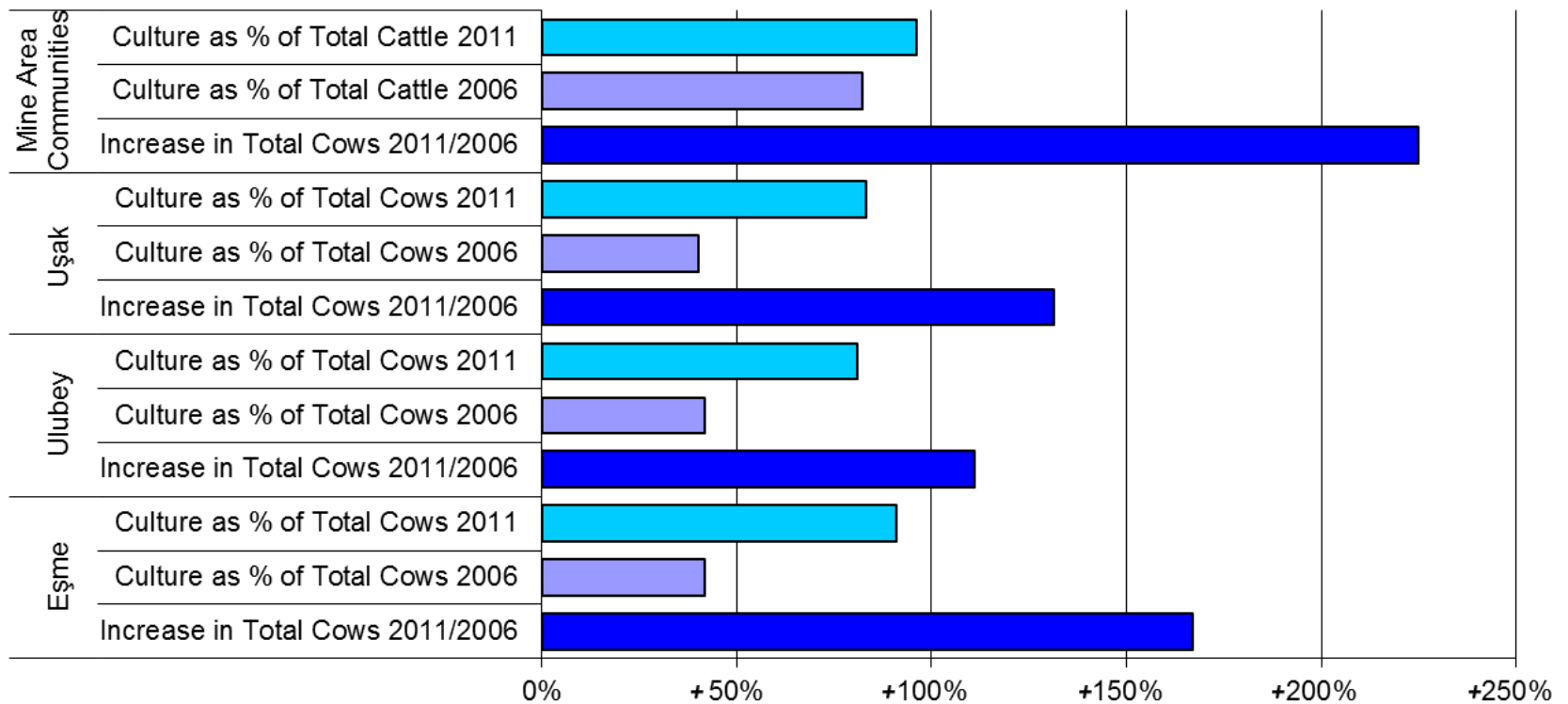




eldorado gold

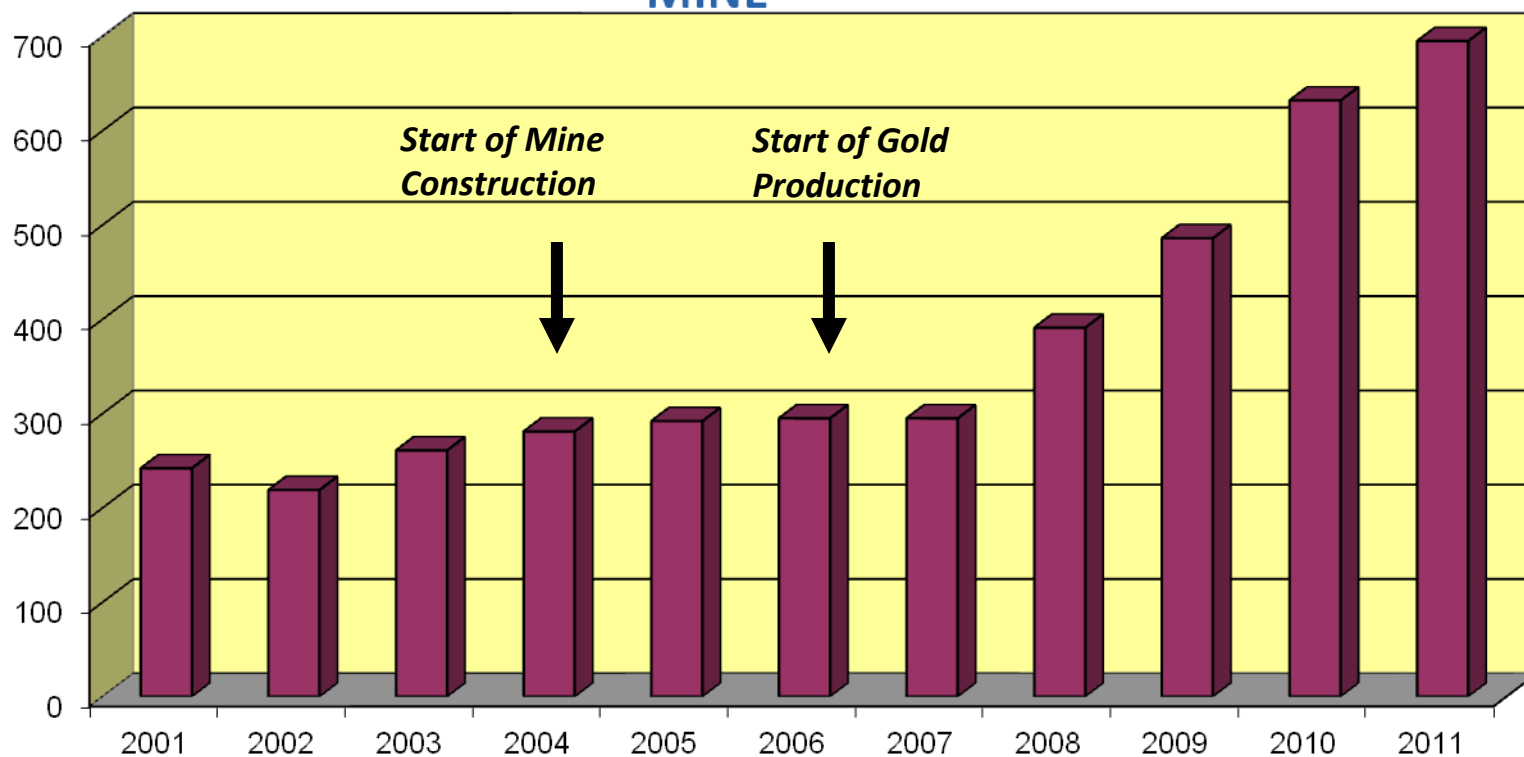
CHANGES IN COW NUMBERS AND GENETICS IN UŞAK

Changes in Cattle Numbers and Genetics 2006-2011





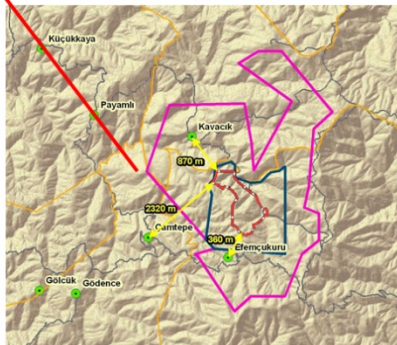
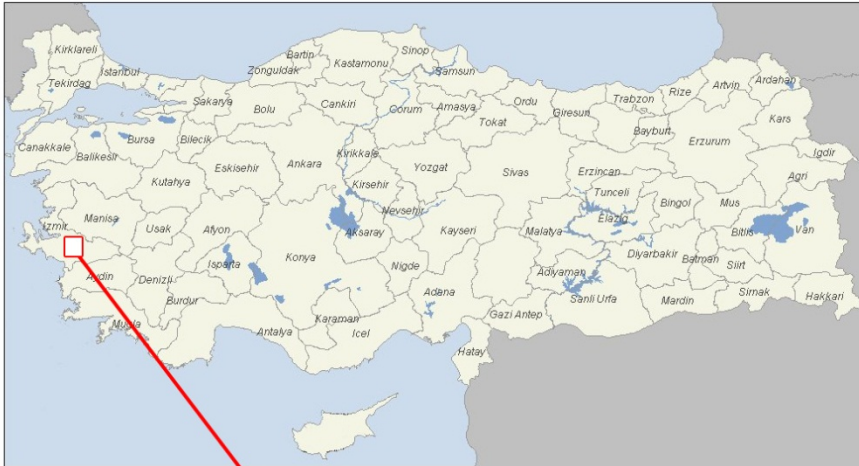
TOTAL BEE HIVES IN VILLAGES SURROUNDING KIŞLADAĞ MINE





eldorado gold

CSR IN/AROUND EFEMÇUKURU GOLD MINE - IZMIR



FACT SHEET – EFEMÇUKURU

- RECEIVED ENVIRONMENTAL POSITIVE CERTIFICATE IN Q3 2006
- POURED FIRST GOLD IN Q3 2011
- PROVEN + PROBABLE RESERVES : 46 TONNES AT 9.13 g/t
- PRODUCED GOLD : ~3 TONNES (since first gold poured till today)
- ANNUAL PRODUCTION : 600,000 TONNES
- ROYALTY PAID TO TREASURY FOR 2012 IS 705,000 USD
- ROYALTY PAID TO IZMIR FOR 2012 IS 705,000 USD
- RENTAL FEE PAID TO FORESTRY FOR 2012 IS 605,000 USD
- NUMBER OF EMPLOYEES : ~ 400

**** CORPORATE TAX PAYED ABOUT 62 MILLION USD IN 2012**



eldorado gold

SUPPORT TO THE GIRLS EDUCATION – EFEMCUKURU VILLAGE



COST : 150,000 USD



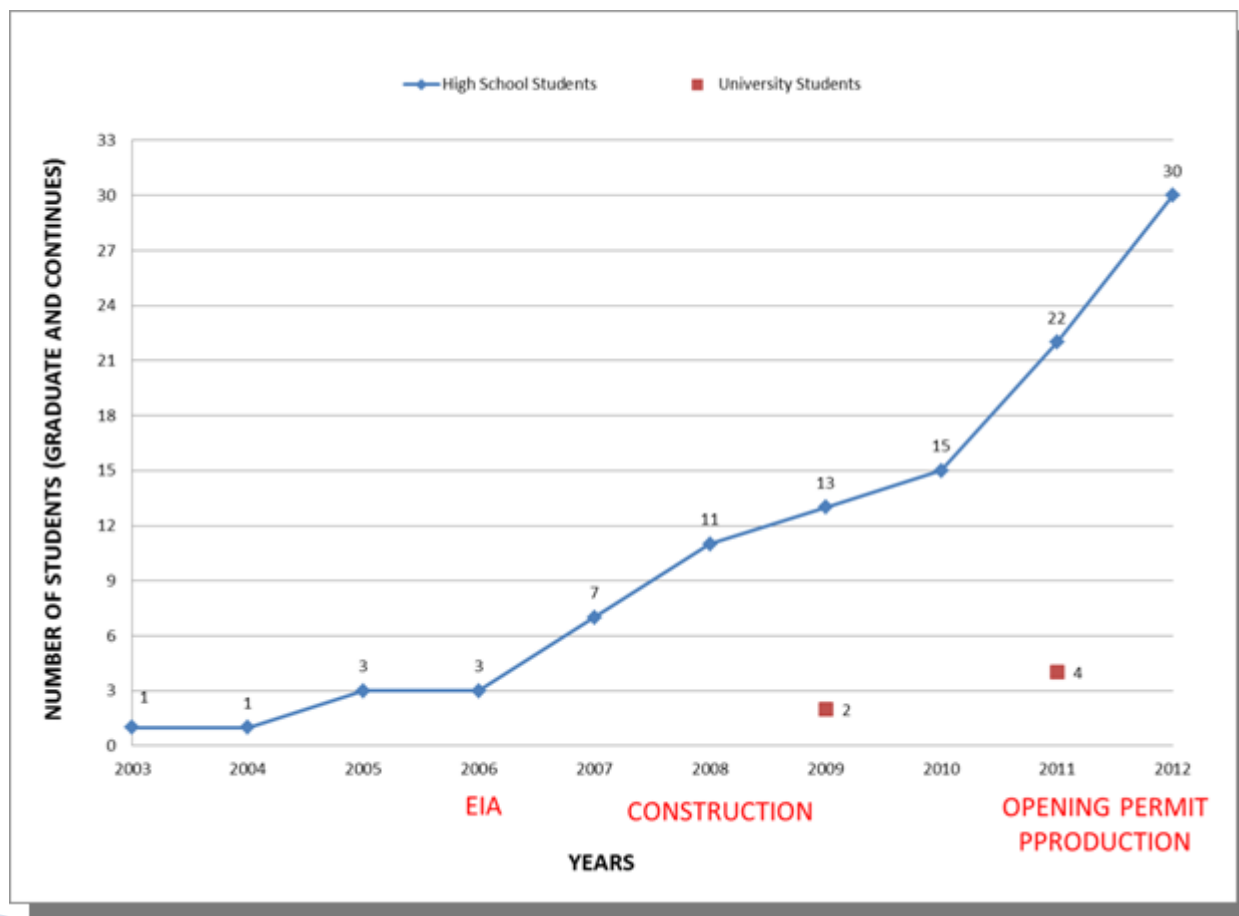
www.eldorado gold.com





eldorado gold

GRAPH OF EDUCATION RATIO BY THE PROJECT DURATION





eldorado gold

SUPPORT TO THE NURSERY CLASSES– EFEMCUKURU VILLAGE



COST : 20,000 USD



www.eldoradogold.com

 **TÜPRAG**



eldorado gold

FINANCIAL SUPPORT TO THE CAMPAIGN FOR REDUCING VIOLENCE AT SCHOOLS



COST : 326,000 USD



www.eldorado gold.com



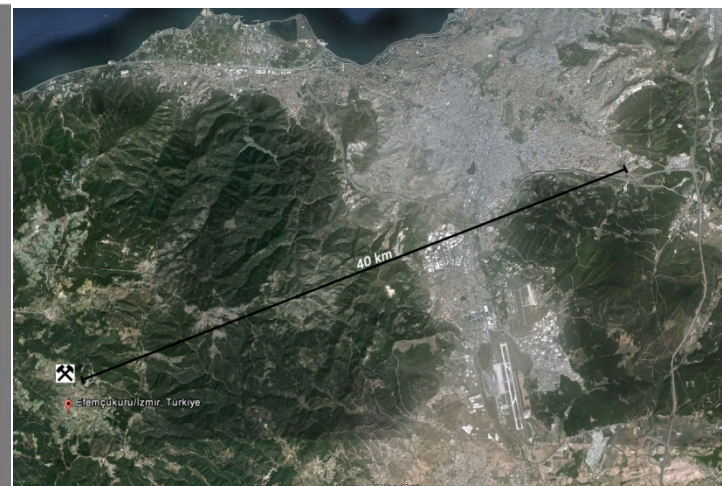


eldorado gold

FURNITURE & COMPUTER SUPPORT FOR COMPUTER ROOM IN MINING ENGINEERING AND GEOLOGY DEPARTMENT - UNIVERSITY OF DOKUZ EYLÜL



COST : 90,000 USD



University– Project Area : 40 km



eldorado gold

MODERN VINEYARD NEAR THE PROJECT AREA



Vineyard Project

- 10 ha planted in cabernet, merlot, shiraz, chardonnay
- 60 ha of table grapes
- 2012 yield 7.5t wine grapes 20t table grapes



COST : 1,900,000 USD





eldorado gold

COMMUNITY HOUSE– EFEMCUKURU VILLAGE



COST : 30,000 USD



www.eldoradogold.com





eldorado gold

DONATING FIRE PONDS



COST : 220,000 USD



www.eldoradogold.com



CSR PROJECT BUDGETS BY YEAR

DONATION COSTS- KISLADAG GOLD MINE	
2005	20,000 USD
2006	550,000 USD
2007	125,000 USD
2008	1,100,000 USD
2009	415,000 USD
2010	1,000,000 USD
2011	1,000,000 USD
2012	400,000 USD
2013	7,500,000 USD *
TOTAL	12,110,000 USD

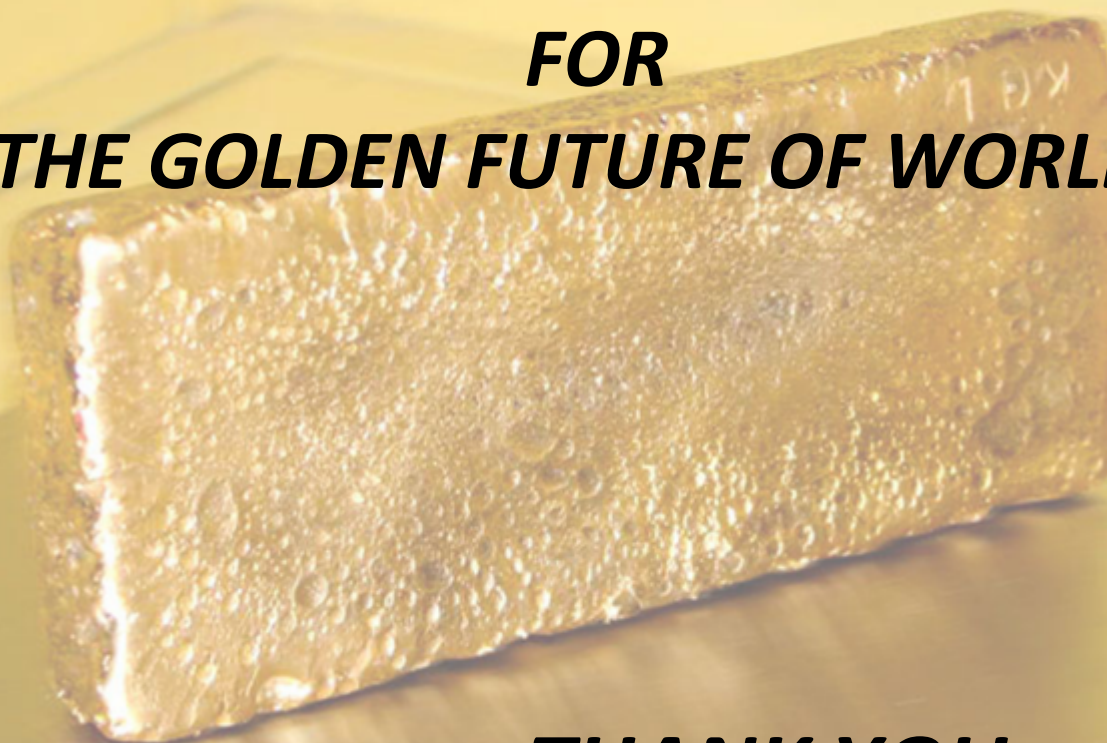
DONATION COSTS- EFEMCUKURU GOLD MINE	
2006	48,000 USD
2007	115,000 USD
2008	325,000 USD
2009	210,000 USD
2010	370,000 USD
2011	160,000 USD
2012	260,000 USD
2013	1,200,000 USD *
TOTAL	2,688,000 USD

* Approximate value by the end of the year



eldorado gold

***....WE ARE WORKING
FOR
THE GOLDEN FUTURE OF WORLD...***



THANK YOU...



www.eldorado gold.com

