

# Developing and empowering leaders and coalitions to achieve change in mining for development

Presenter  
Muza Gondwe  
IM4DC Alumni Coordinator

July 2015

FUNDED BY



Australian Government  
Department of Foreign Affairs and Trade



IMPLEMENTING PARTNERS



THE UNIVERSITY  
OF QUEENSLAND  
AUSTRALIA



THE UNIVERSITY OF  
WESTERN AUSTRALIA



# Role of IM4DC

## UNIVERSITY PARTNERSHIP SUPPORTED BY AUSTRALIAN GOVERNMENT

### Mission

Support developing countries to transform their extractive resource endowment into inclusive and sustainable economic growth and social development

### Goal

IM4DC alumni and partner institutions effect change through transformational leadership in mining for development and related activities

### Themes

Governance and  
Regulation

Community and  
Environmental  
Sustainability

Operational Effectiveness





# Activities

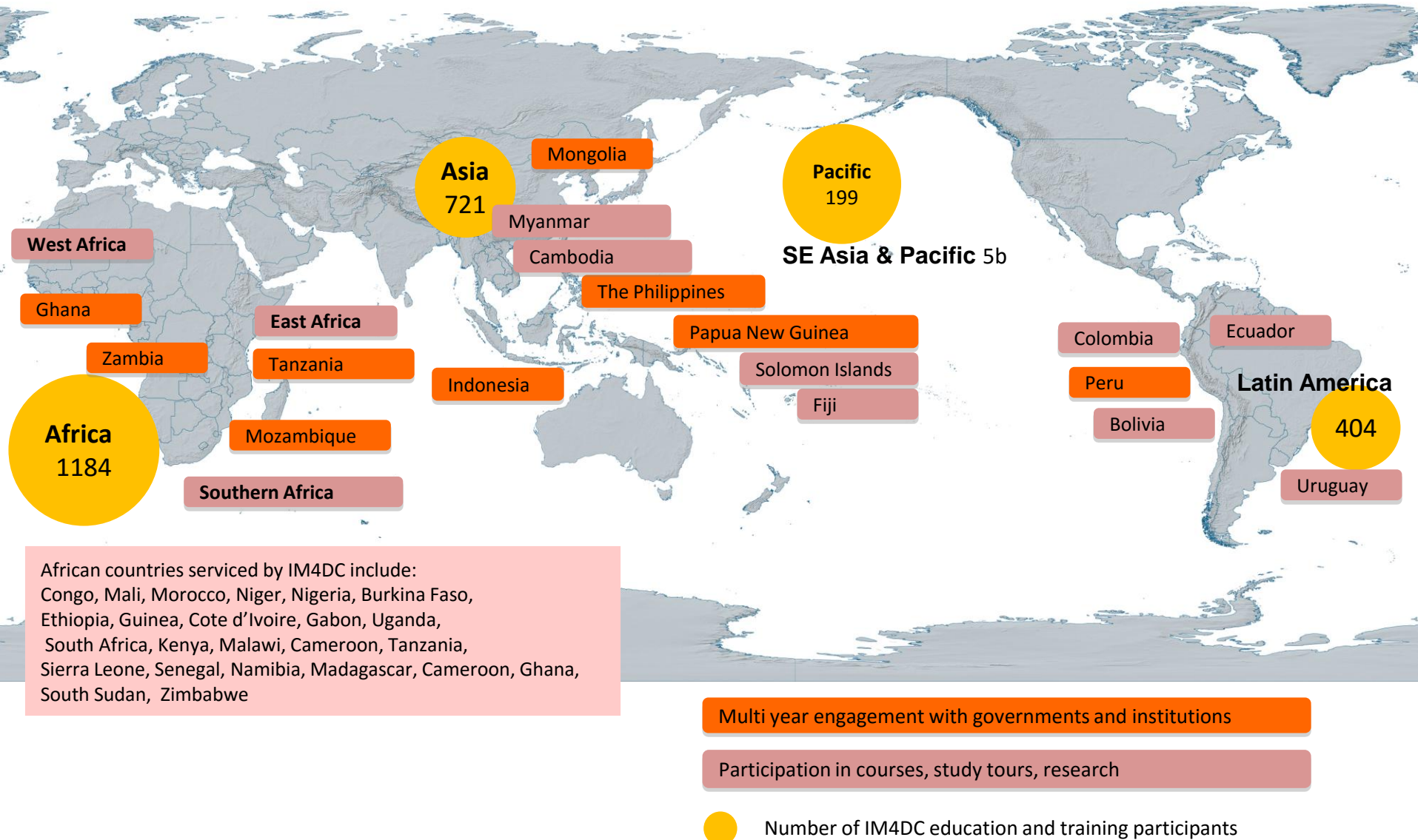
## INTEGRATED PROGRAM OF CAPACITY-BUILDING



# IM4DC activities facilitate shared value across all parts of mining lifecycle



# Where IM4DC is working





# IM4DC delivery

GLOBAL CAPACITY-BUILDING OUTPUTS 2012-2015

2749

participants from 65  
developing countries

16109

participant  
training days

102

short courses

30.4%

Female participation

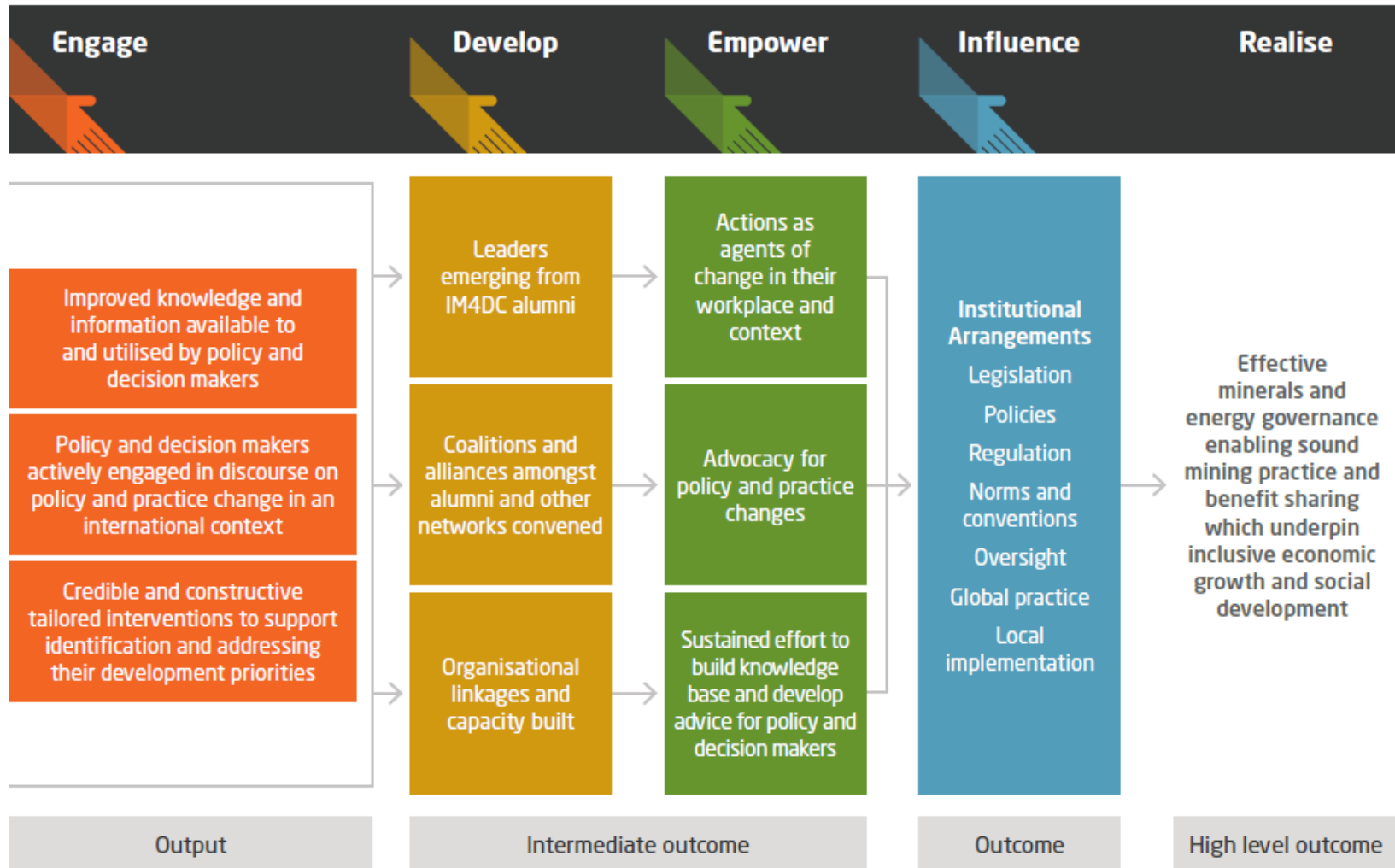
1700+

in mining & development  
alumni network

66

action research  
projects

# IM4DC strategic framework



## Capability Building on Progressive Mine Rehabilitation in Large-Scale Nickel Mining in Caraga Region, Philippines



*“mining company rehabilitation programs involved merely planting trees in monoculture just to comply with the government’s requirement. Now, there is an increasing trend towards ecologically sound rehabilitation”*



## Empowering women artisanal miners in Madagascar



*“Vulnerability results from lack of economic empowerment among women and people with disabilities. Small scale mining should be a path way for sustainable development from mining resources*

Herizo Harimalala Tsiverisoa, Institut De Gemmologie de Madagascar

# Abandoned mines in Puno region, Peru





# Capacity building around mine safety and governance in Indonesia



*“It will also reduce the health and safety incidents significantly and also lower the pollution occurrence costs by mining activities and environmental damage by mining activities by increasing the surveillance and the monitors by the Mine Inspectors.”*



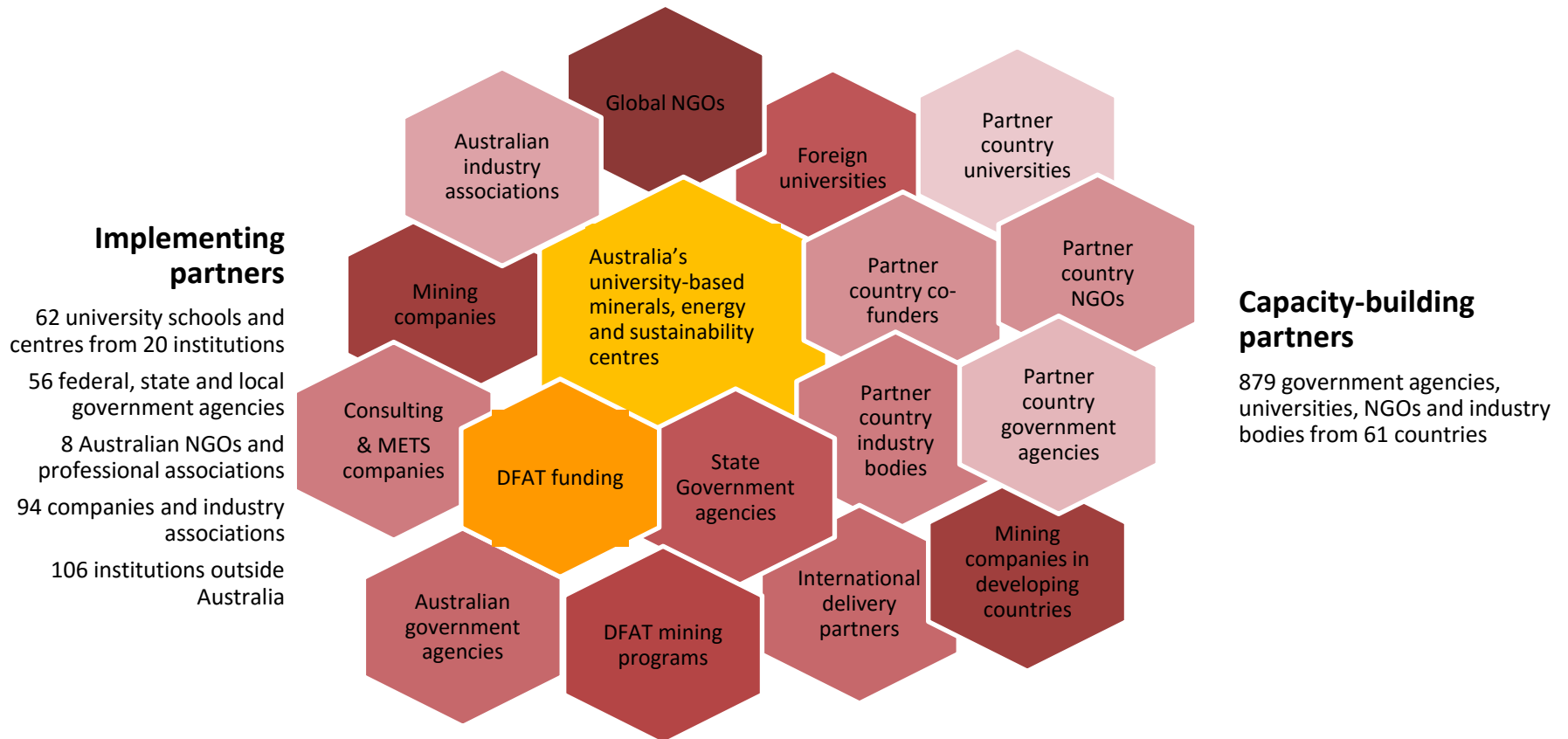
# Africa Resources Negotiation Network



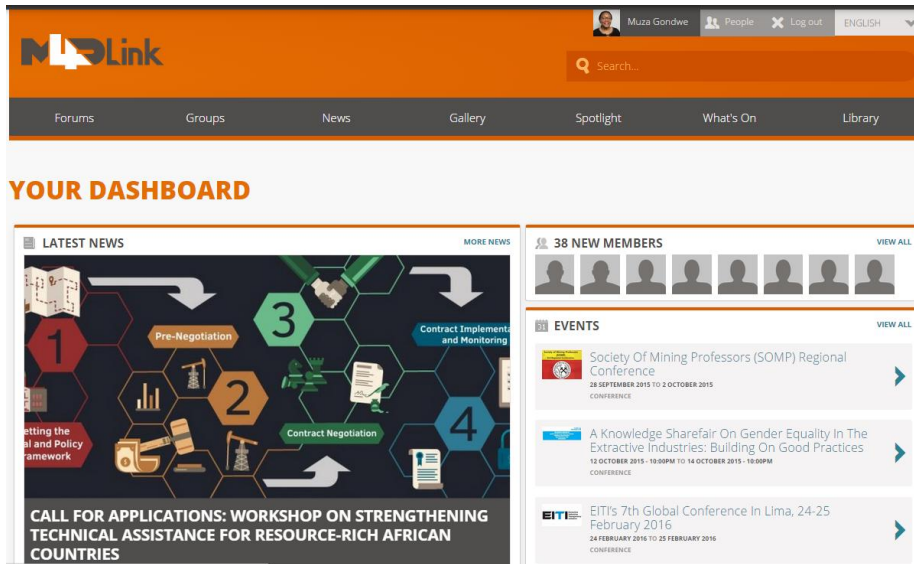
*“...so at least the conversation is happening around what negotiation support actually looks like. It’s not your expert coming in and doing it for you”*

# IM4DC: a multi-national public-private partnership

UNIVERSITIES AT THE CENTRE AS TRUSTED, EVIDENCE-BASED INSTITUTIONS, WITH CORE BUSINESS IN BUILDING HUMAN AND INSTITUTIONAL CAPACITY



# Ongoing relationships with alumni



*“This network that you have created is an astonishing result of your work. What you have here the interactions and collaborations that this is fostering will mean more to change across the industry and across emerging nations than anything else that I know of.”*

Dr Anthony Hodge, President, International Council on Mining and Metals



# Minerals and Energy for Development Alliance



## Conclusion

The success of IM4DC is ultimately through the work of alumni - this has been enabled by

- Reputation of the universities and mining in Australia
- Building relationships
- Strengthening partnerships
- Flexibility to respond to local needs with tailored programs
- Personalised approach beyond activity