

SOCIAL RISK IN THE EXTRACTIVE SECTOR: DO MINERS NEED NEW SKILLS?

Jocelyn Fraser & Andre Xavier, PhD.





<http://waitakerenews.blogspot.ca/2010/04/what-march-anti-mining-march.html>

THE COST OF CONFLICT



**IN THE
EXTRACTIVE
SECTOR**

**UP TO
\$10,000
PER DAY**
DURING INITIAL EXPLORATION

**UP TO
\$50,000
PER DAY**
DURING ADVANCED EXPLORATION

**UP TO
\$20 MILLION
PER WEEK**
DURING OPERATIONS



www.csrsm.uq.edu.au/conflict-costs

Graphic by digitalPR.com.au

SMI CSR
Centre for Social
Responsibility in Mining



Image. Courtesy of <http://www.minesandcommunities.org>

GLOBAL MINING COMMUNITY CONFLICTS

2014

2013

2012

0

10

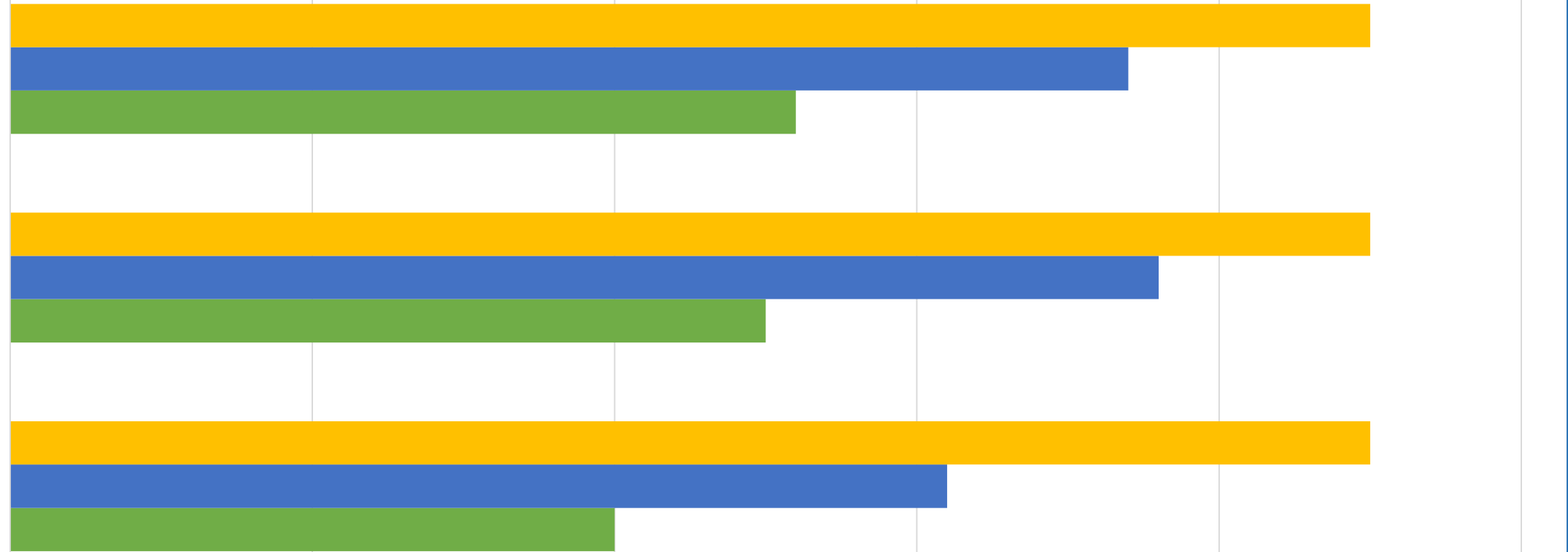
20

30

40

50

Incidents Companies Countries



CAUSES OF CONFLICT

1. Land use

2. Failure to benefit to local communities

3. Lack of consultation

4. Human rights



Queen's
UNIVERSITY



McGill



THE UNIVERSITY
OF ARIZONA®

NON-TECHNICAL COURSES

1. Sustainable resource development (3rd)

2. Front line supervision (3rd)

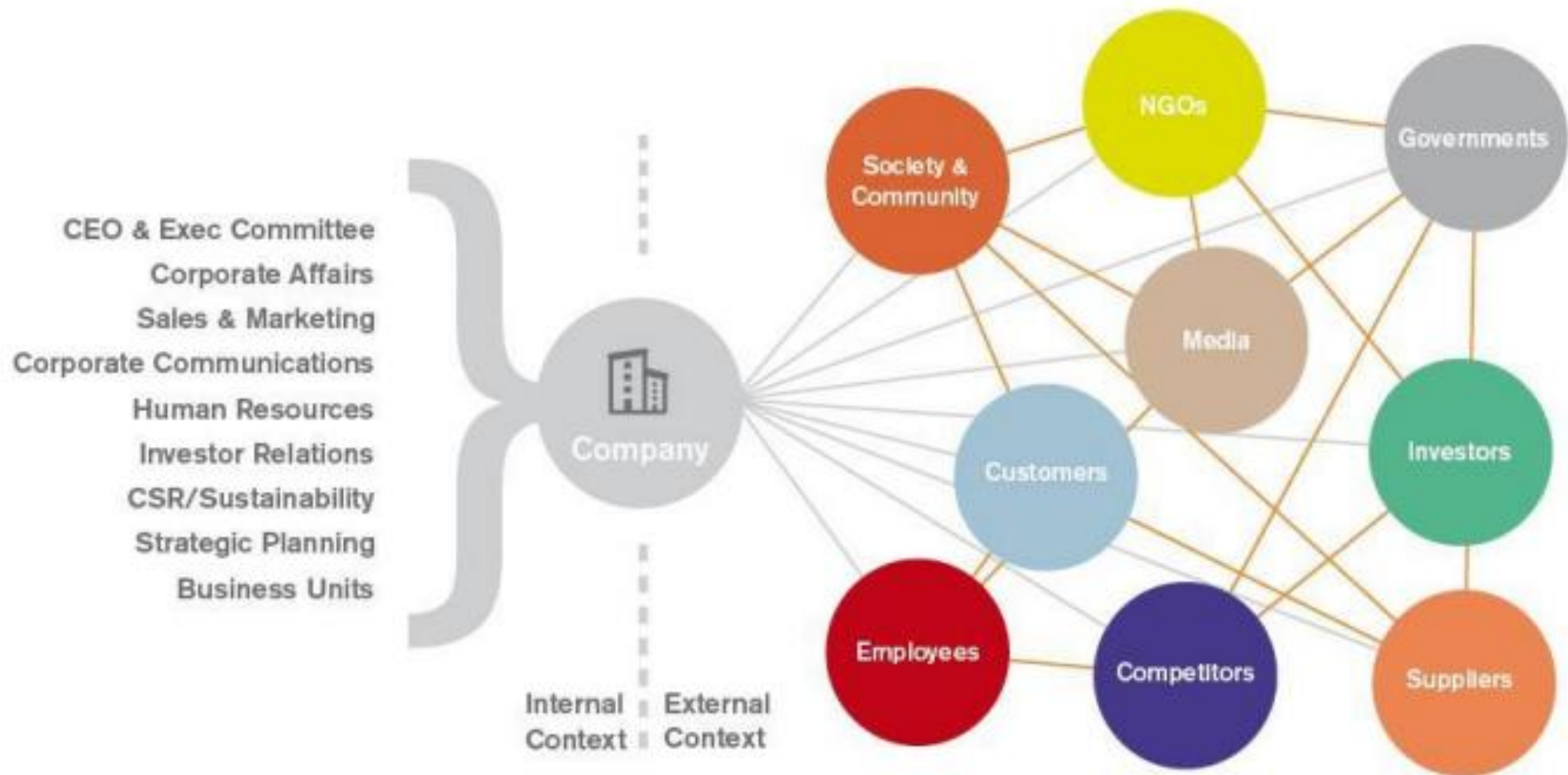
3. Mine management (4th)

4. Mining & the environment (4th)

5. Mining & sustainability (4th)

“The Engineering profession expects of its members competence in engineering as well as an understanding of the effects of engineering on society. Thus, accredited engineering programs must contain not only adequate mathematics, science, and engineering curriculum content but must also **develop communication skills, an understanding of the environmental, culture, economic and social impacts of engineering on society, the concepts of sustainable development,** and the capacity for life-long learning (CEAB, 2015).

STRONGER INTERNAL ALIGNMENT ALLOWS FOR BETTER MANAGEMENT OF RISKS AND OPPORTUNITIES



Source [Globescan](#)

CONCLUSIONS

For more information:

Jocelyn Fraser

PhD Candidate

Norman B. Keevil Institute of Mining Engineering, UBC

jocelynfraser@shaw.ca

Andre Xavier, PhD

Lifelong Learning Program Manager

Norman B. Keevil Institute of Mining Engineering, UBC

Andre.Xavier@ubc.ca